



# Sensorturn

## Sensor-controlled turntable for Petri dishes

The touch-free IR-Sensor technology guarantees extremely simple operation with movements of the hand.

Flexible Start-Stop functions or the second timer control with variable rotational periods from 1 - 25 seconds. For longer applications the time can be extended to 125 seconds.

A continuously variable rotational speed control of 14 - 110 rpm

Sensorturn ensures uniform and individual plating of the Petri dishes up to a diameter of 100 mm (optional: up to 150 mm).

An extraordinarily low working height allows effortless work. The highest degree of sterility is ensured by the device's stainless steel construction.

The **Sensorturn** is a high-performance, UV-resistant and flame-sterilizable device.

Stainless steel construction

Variable rotational speed control

Short time operation 1 - 125 seconds

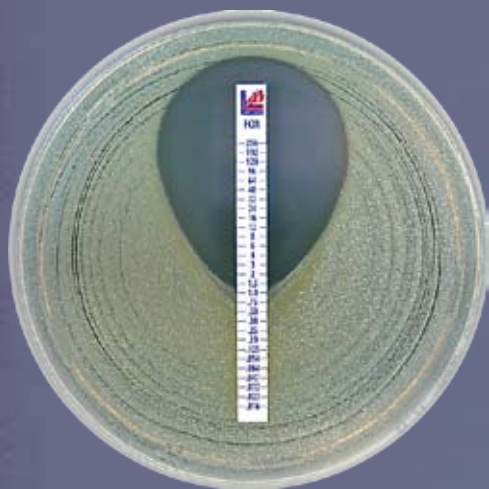
Turntable with silicone covering & centring ring (autoclavable)

Switch on and off with movements of the hand

UV-resistant and flame-sterilizable

Minimum space requirement

2-year warranty



**Sensorturn**  
Turntable for Petri dishes  
Rotary speed range 14 - 110 rpm  
2 operating modes

**Cat. no. 96795**

new design & more accessories

**New**



## The range:

includes IR-Sensor

2 operating modes:

IR-Sensor: Time / Constant

Turntable with transparent silicone covering & centring ring

Screwdriver for IR-Sensor detection range

Power connection

Instruction manual and 2-year warranty

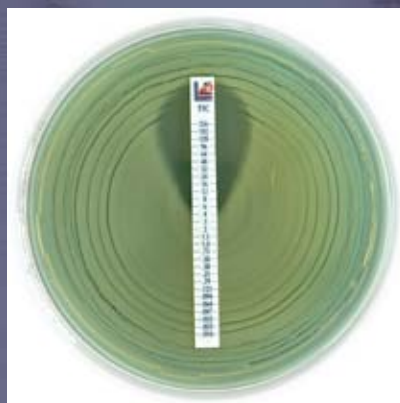
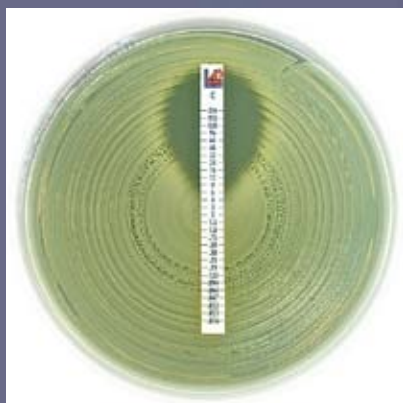
**Sensorturn**

**Cat. no. 96795**

Rotary speed range 14 - 110 rpm

## Technical data:

Petri dish size:	up to Ø 100 mm (Ø 150 mm optional)
Rotary speed range:	Sensorturn: 14 - 110 rpm
Rotational direction:	clockwise
Detection range IR-Sensor:	5 - 50 mm, adjustable
Timer range Time operation:	1 - 25 sec or 5 - 125 sec, adjustable
Constant operation:	unlimited
Operating voltage / input:	9 V - 15 V DC / 1.5 VA
Protection class:	II
Measurements (w x h x d):	109 x 59 x 130 mm
Weight:	670 g
Licenses:	CE: EN 61326-1, EN61000-3-2, EN 61010 EEC guidelines: 89/336/EEC, 73/23/EEC



73/23/EEC  
89/336/EEC



EN 61326-1 A1/A2/A3  
EN 61000-3-2:2000  
EN 61010



## LIOFILCHEM® s.r.l.

Via Scozia zona ind.le, 64026 Roseto degli Abruzzi (Te) Italy

Phone: +39 0858930745 Fax: +39 0858930330

Email: [liofilchem@liofilchem.net](mailto:liofilchem@liofilchem.net)

Internet: <http://www.liofilchem.com>